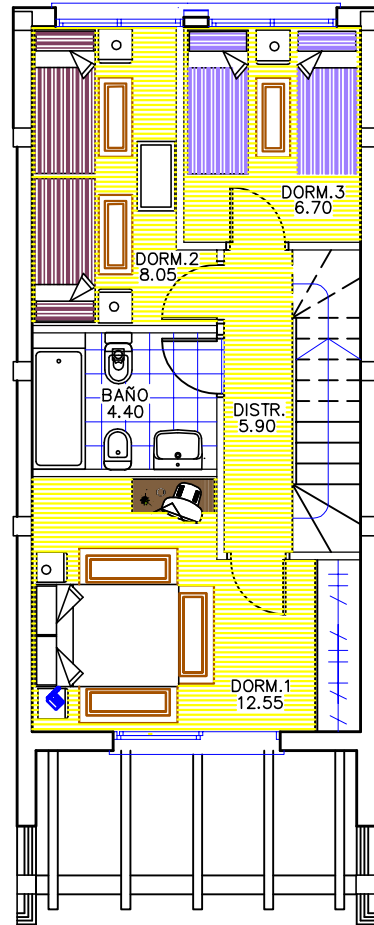


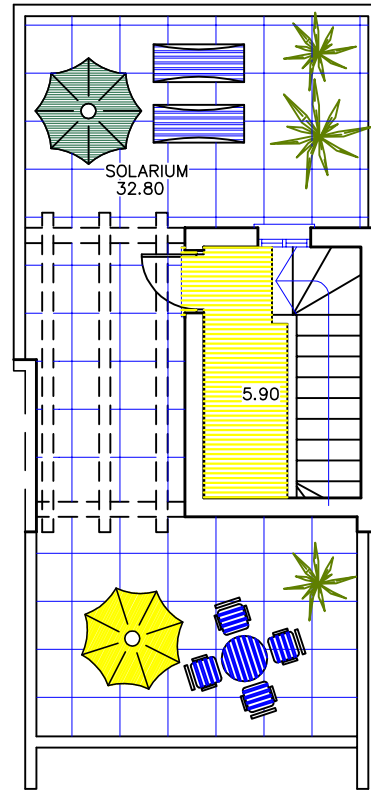
PLANTA BAJA

S.util.= 35.46m²+ 2.05m²= 37.51m²
S.con.= 42.37m²+ 2.05/2m²= 43.39m²



PLANTA PRIMERA

S.util.=37.60m²
S.con.=44.85m²



PLANTA SOLARIUM

Sutil=5.90m²
Scon=9.53m²



VIVIENDA TIPO B (CENTRO)

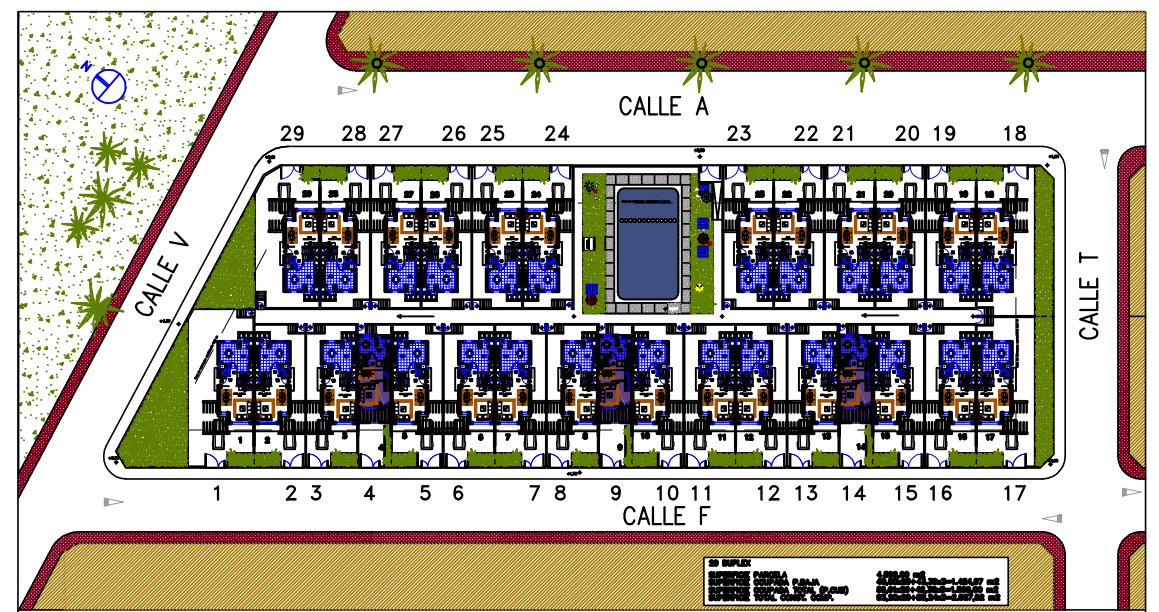
Socupada(p.b.)=43,39 m²

Sutil = 81,01 m²

Scont = 97,77 m²

Ssolarium = 32,80 m²

ESCALA 1/100



ESQUEMA INDICATIVO SITUACION